

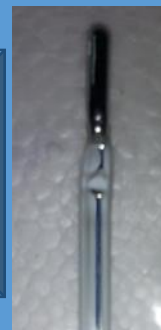
## EXCEPTIONS IN PHYSICAL PROPERTIES OF METALS AND NON-METALS

Metals have high melting points but gallium and cesium have very low



GALLIUM

All metals exist as solid at room temperature except mercury which is liquid at room temperature.



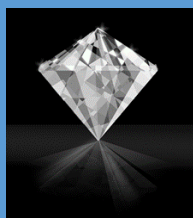
MERCURY

IODINE

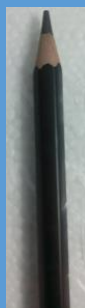


Iodine is a non-metal but it is lustrous.

Non-metals are soft but diamond, an allotrope of carbon, is the hardest natural substance known and has a very high melting and boiling point.



DIAMOND



GRAPHITE

Non-metals are bad conductor of electricity but graphite, another allotrope of carbon, is a good conductor of electricity.



SODIUM

Metals are hard but alkali metals (lithium, sodium, and potassium) are so soft that they can be cut with a knife.



LITHIUM

Picture sources: [https://en.wikipedia.org/wiki/Gallium#/media/File:Gallium\\_crystals.jpg](https://en.wikipedia.org/wiki/Gallium#/media/File:Gallium_crystals.jpg)  
[https://upload.wikimedia.org/wikipedia/commons/4/41/Iodine\\_crystals.jpg](https://upload.wikimedia.org/wikipedia/commons/4/41/Iodine_crystals.jpg)  
[https://en.wikipedia.org/wiki/Sodium#/media/File:Na\\_\(Sodium\).jpg](https://en.wikipedia.org/wiki/Sodium#/media/File:Na_(Sodium).jpg)  
<https://upload.wikimedia.org/wikipedia/commons/2/21/Limetal.JPG>  
<https://pixabay.com/en/diamond-gem-jewel-shiny-fashion-161739/>