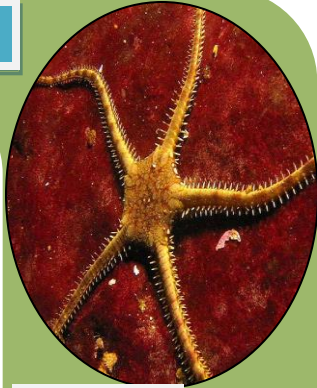




Star fish

Brittle star



Aboral



Oral

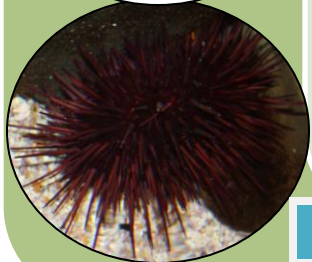
Sea lily



Sand dollar



Sea urchins



Sea cucumber

ECHINODERMATA

- Triploblastic organism with spiny skin and coelom (DEUTEROSTOME)
- Larva bilaterally symmetrical but adult shows (penta) radial symmetry
- Ventral (oral) and dorsal (aboral) side present
- Oral side with ambulacral groove
- Water vascular system present
- Tube feet as locomotory organ
- Water helps in feeding, locomotion, respiration and excretion

Members of the phylum Echinodermata include sea stars (starfish), sea urchins, sea cucumbers, sand dollars, brittle stars, feather stars, etc.



Picture sources:

http://www.newworldencyclopedia.org/entry/Sea_urchin

<http://www.fis.com/fis/worldnews/worldnews.asp?monthyear=12016&day=22&id=81789&l=e&country=&special&ndb=1&df=0>

<http://www.thetreeofnature.com/what%20is%20an%20echinoderm.html>

<http://www.thetreeofnature.com/what%20is%20an%20echinoderm.html>

https://commons.wikimedia.org/wiki/File:Keyhole_sand_dollar_07.jpg

<http://takvera.blogspot.in/2012/02/sea-cucumber-poo-moderates-impact-of.html>

Other picture contributed by Dr. Sabyasachi Mazumdar