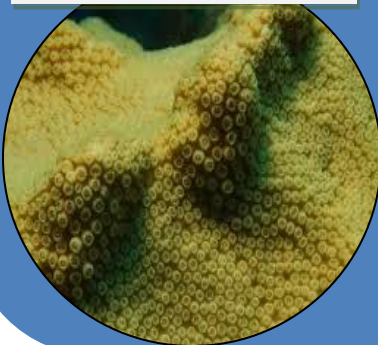


## JELLY FISHES(Medusa)



**CORALS (Colonial polyps)**



## SEA ANEMONES

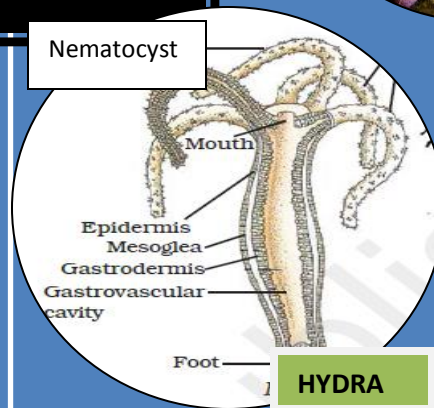


**SEA PEN (Polyp)**

## CNIDARIA

- Aquatic
- Diploblastic (two layers of cells- inner and outer)
- Radially symmetrical
- Stinging cells- nematocysts present
- Central gastro-vascular(digestive) cavity with single opening
- Two basic body forms: polyp (cylindrical) and medusa(bell shaped) present

Nematocyst



**HYDRA**

Picture sources:

[https://commons.wikimedia.org/wiki/File:Jellyfish\\_Monterey\\_Bay\\_Aquarium.jpg](https://commons.wikimedia.org/wiki/File:Jellyfish_Monterey_Bay_Aquarium.jpg); sea pen [https://commons.wikimedia.org/wiki/File:Virgularia\\_sp.\\_\(Purple\\_sea\\_pen\).jpg](https://commons.wikimedia.org/wiki/File:Virgularia_sp._(Purple_sea_pen).jpg)

Hydra NCERT. Other picture are contributed by Dr. Sabvaschi Maiumdar